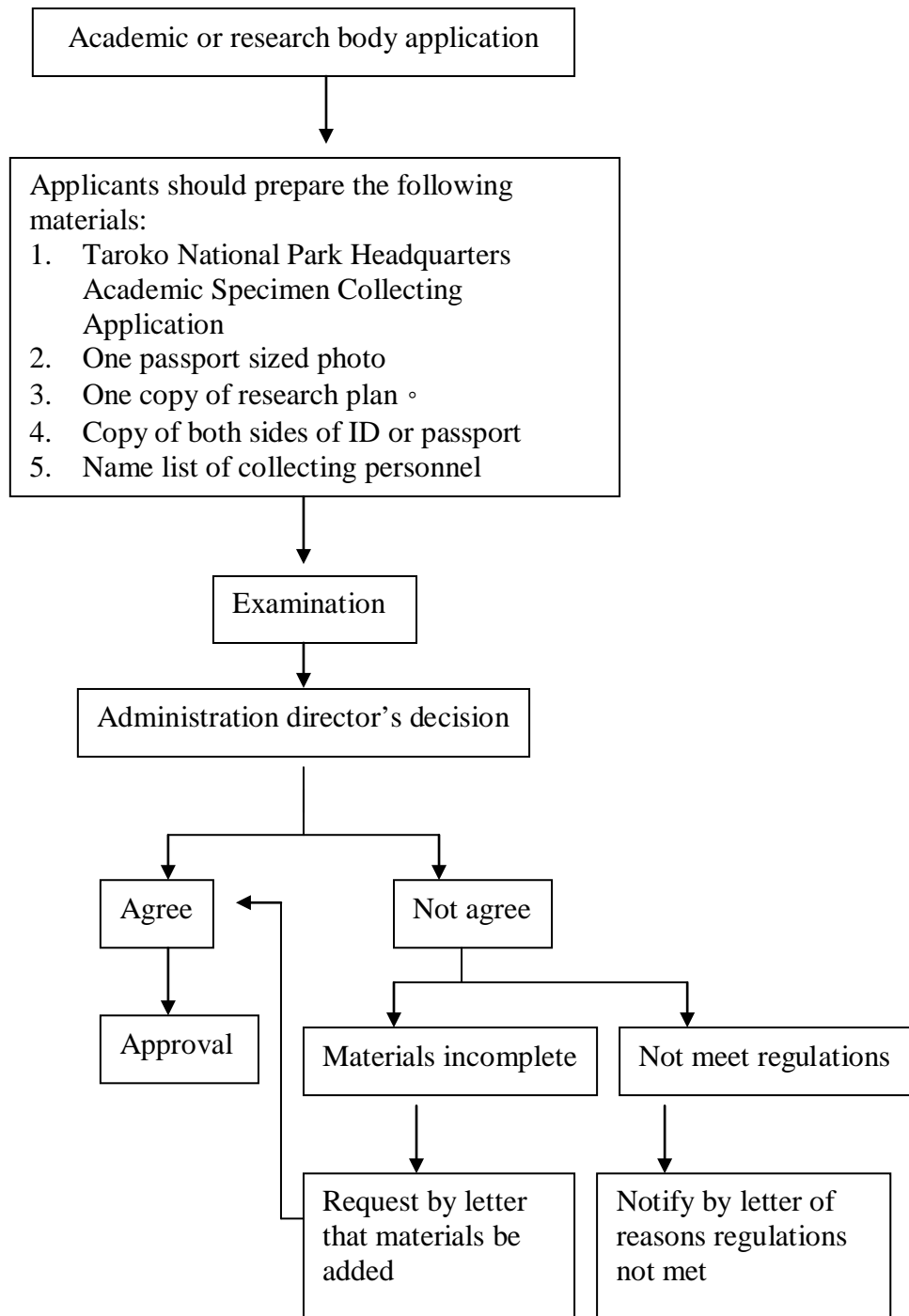


Academic Specimen collecting Application Process for Taroko National Park Headquarters, Construction and Planning Agency, Ministry of the Interior



Notes:

1. Handling time: reply will be received in about five working days. If entry into a Ecological Protection Area is required or application involves protected species, a reply will take about 14 days.
2. If collecting requires the setting of nets or traps etc the approval of the managing authority (county government) is needed.